

## ECT Regulation and Quality Register

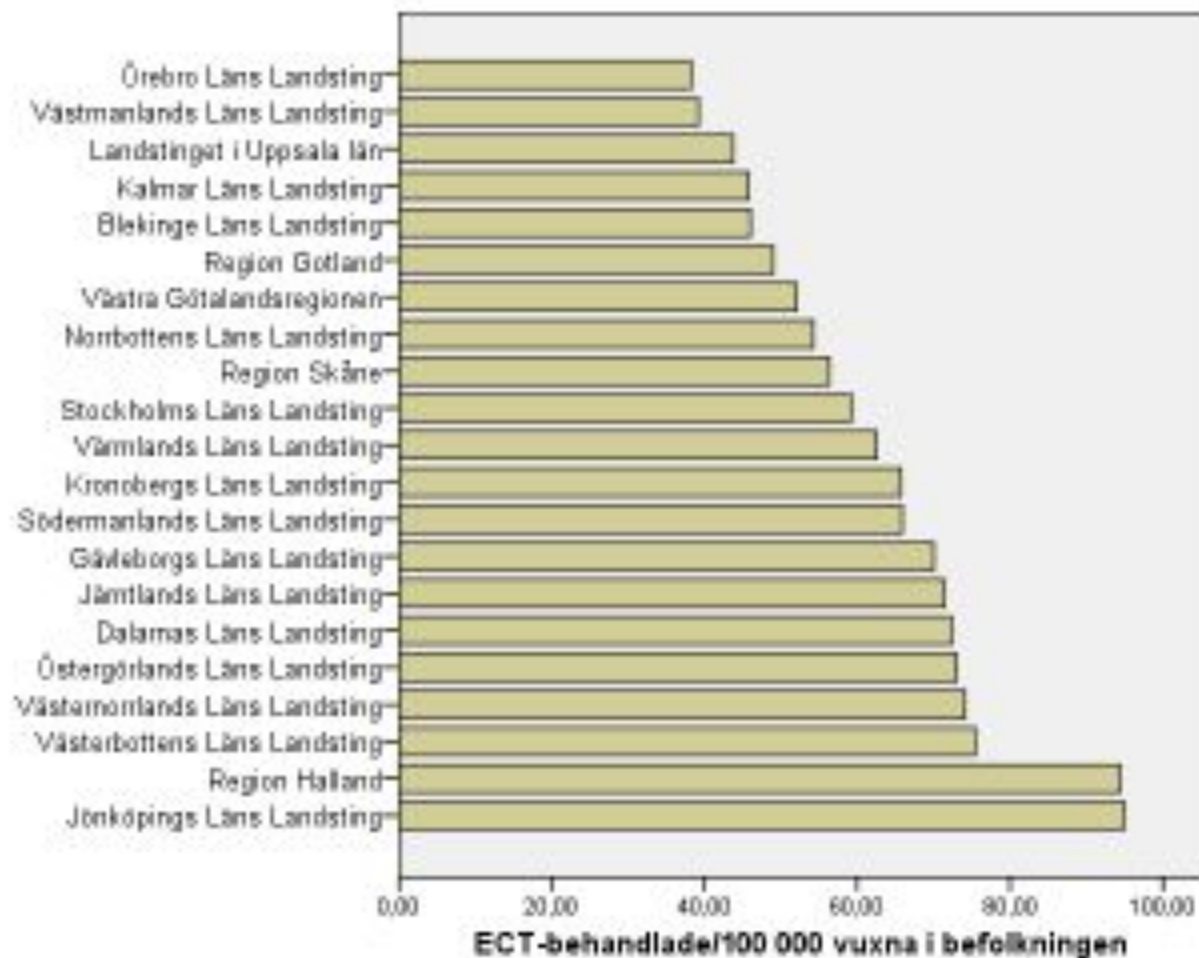
- Axel Nordenskjöld, MD, PhD student,
- Psychiatric Research Centre, Örebro University

## Guidelines

- Currently no Swedish guidelines
- Pia Nordanskog et al at work on behalf of the Swedish Psychiatric Association

## ECT in Sweden

- 4600 patients 2011
- 58 hospitals provide ECT



## Information and consent

- Information regarding treatment alternatives
- Patient-doctor consultation
- No formal consent procedure
- If the patient does not resist treatment is accepted

## Involuntary hospitalisation

- 1) A "serious mental disorder" usually a psychosis or melancholic depression
- 2) hospitalisation unavoidable
- 3) refuses or unable to form a well-grounded decision
  
- Physician - 24 h
- Psychiatrist confirms - 4 weeks
- Thereafter by court decision – 4/6 months at a time

## ECT during involuntary care

- During involuntary hospitalisation
- the treating psychiatrist can prescribe ECT
- independent of the patients desires
- independent of suicide risk

## Patient register

- National Board of Health and Welfare
- mandatory
- Personal identity number, hospital-stay, diagnoses, interventions including ECT
  
- Quality register ECT
- non mandatory



## Regulations

- 1) Systematic quality assurance and development (HSL § 31)
- 2) Finance, plan and conduct research (HSL § 26b )

## Regulations

- 1) Systematic **quality assurance and development**
- 2) Finance, plan and conduct **research**

## Quality register ECT

- **quality assurance and development**
- **research**
  
- Personal identity number
- indication
- symptoms
- treatment parameters
- effects
- complications and side effects

## Quality register ECT

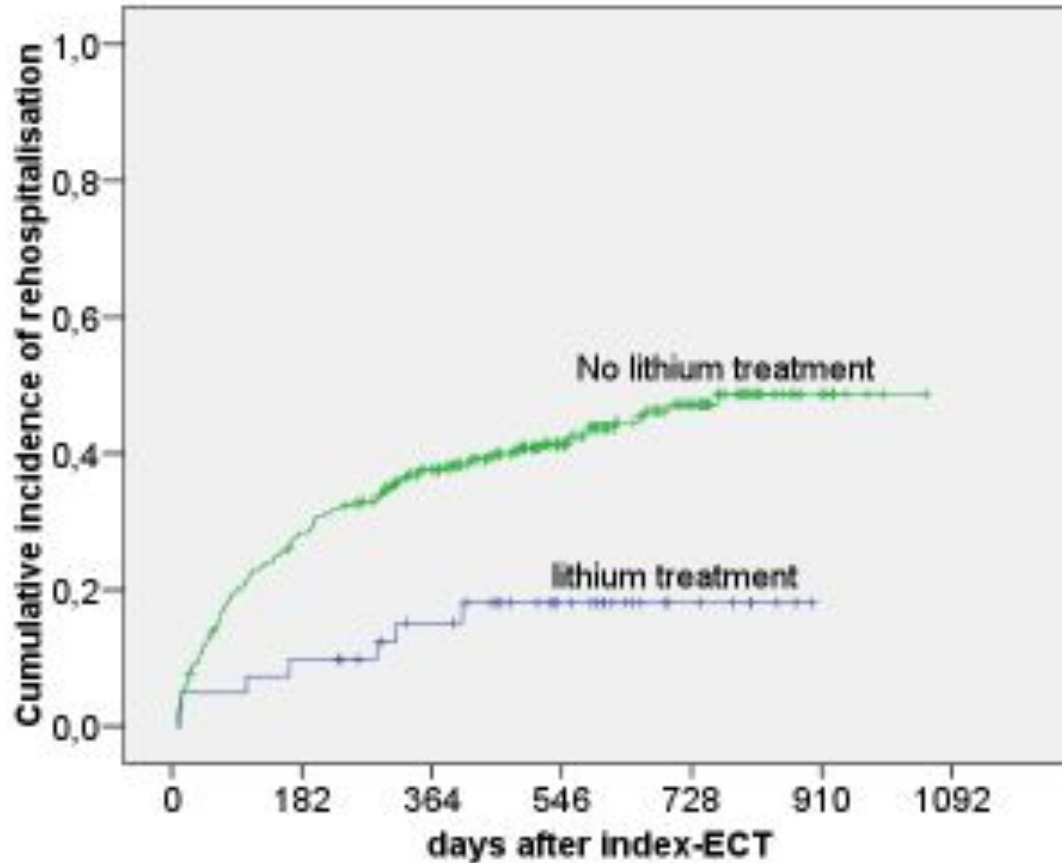
- Regional organisation 6 health care regions 10 hospitals each
- Lars von Knorring, director
- Tonny Andersén, North
- Niclas Bengtsson, North
- Martin Hultén, South
- Mikael Landén, West
- Johan Lundberg, Stockholm
- Pia Nordanskog, South east
- Axel Nordenskjöld, Middle (Uppsala-Örebro)
- Aki Johansson, neuropsychology,
- Ralf Ansjön, anesthesiology

## Quality register ECT

- Information
  - Consent not necessary
  - Opt-out
- 
- 55 out of 58 hospitals, few patients opt-out

# Register linkage

Quality register, medication register and hospital discharge



Depress Res Treat.  
2011;2011:470985

## PREdiction For ECT (PREFECT)

- Genetic determinants for treatment effects
- Patients included in Quality register ECT will be contacted
- Written consent
- Blood is collected
- GWAS
- Information in linked national registers
- 5000 patients
- 2012 December to 2017